

PROGRAMS • CLASSES • EVENTS  
Summer Reading Edition  
June – August 2020



Palatine  
**LIBRARY**  
District



# Dig Deeper

at  
Palatine Library

Program Sign-up  
Changes on Page 2

*Inspiring Connection,  
Curiosity, and Joy*



# Inside

Program Information.....2  
Naming Opportunities.....3  
Summer Reading Program.....4-5  
Adult Programs.....6  
Health and Wellness/Connect.....8  
Business/Careers/Genealogy.....9  
Tween and Teen Programs.....10  
Children's Programs.....11  
North Hoffman and  
Rand Road Branches.....14  
Book Discussions.....17  
Adult Computer Classes.....18

**Homebound Delivery Services** are temporarily suspended. We hope to reinstate it soon. Please watch our website for information about when we can safely make this service available again. **For more information, call 847-358-5881, x132 or visit [palatinelibrary.org/homebound-delivery](http://palatinelibrary.org/homebound-delivery)**

Are you interested in volunteering in the future? We are seeking enthusiastic volunteers to help deliver materials to homebound patrons. Submit your application at [palatinelibrary.org/volunteer](http://palatinelibrary.org/volunteer)

**Photo Policy:** Palatine Public Library District reserves the right to take photographs and video recordings of participants in Library programs and activities. These images are for Library use only and may appear in Library publicity. Please notify staff if you wish to be excluded from photographs and video recordings. (Policy 3-9 Photography in the Library)

**Just ask us...  
we are ready to assist you!**

**Main Library: 847-358-5881**

**Department Extensions:**

- Library Information: x100
- Renew Materials/Circulation: x125
- Reference/Research/Non-Fiction: x167
- Fiction/Children/Teens: x132
- Computers/Study Rooms: x190
- Meeting Room: x122
- Movies/Music: x104
- Digital Media Center: x180

**Chat:**

[palatinelibrary.org/contact](http://palatinelibrary.org/contact)

**Email:**

Reference and General Questions:

[palatine@palatinelibrary.org](mailto:palatine@palatinelibrary.org)

**Text:**

**847-979-4555**

**North Hoffman Branch: 847-934-0220**

**Rand Road Branch: 847-202-1194**

## Programs May Be Different this Summer!



At the time of publication, Palatine Library was closed and adhering to Governor Pritzker's stay-at-home orders. Staff continued to plan programs with the expectation that our building would be open and programming would continue at some point. As such, the programs and dates in this publication may be changed and will be subject to mandates and social distancing guidelines related to the COVID-19 pandemic.

**Programs may be canceled and/or attendance to programs limited.**

**Please call 847-358-5881 for questions.**

- A la hora de la publicación, Palatine Library estaba cerrada adheriéndose a las ordenes del Gobernador Pritzker de mantenerse en casa. Nuestro personal continuó planeando la programación con la expectativa de que nuestros locales estarían abiertos y la programación continuaría. Por tanto, los programas y fechas en esta publicación pueden cambiar y estarán sujetas a las directrices de los mandatos de distanciamiento social relacionado a la pandemia COVID19.
- **Los programas pueden ser cancelados/o su asistencia puede ser limitada.**
- **Para más preguntas por favor llame al 847-358-5881.**

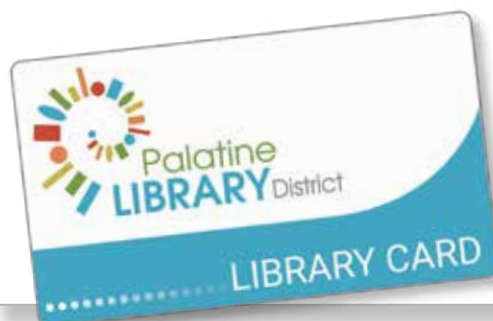
## How to Sign-up for Programs

Staff have worked to make sure we have program offerings throughout the summer. Scheduled programs may be available differently because of social distancing guidelines.

### Here's what you need to know:

- You must **REGISTER FOR ALL PROGRAMS** online or by phone. [palatinelibrary.org](http://palatinelibrary.org), 847-358-5881
- Registration is now **2-WEEKS BEFORE** each event.
- Programs will have **LIMITED ATTENDANCE**.
- Some **PROGRAMS MAY BE VIRTUAL**. Check the Library Event Calendar for updates.
- When you sign-up online, please **LEAVE YOUR EMAIL** so we can easily update you with any changes.

## Library Card Application Online



If you feel more comfortable applying for a library card from home, District residents can apply online for a 90-Day library card. Visit [palatinelibrary.org/card-application](http://palatinelibrary.org/card-application)

Fill out and a staff member will contact you by phone or email in 2-3 business days. Come in within 90 days to show photo I.D. and pick up your card.



## Give to Support More of What You Love

As part of our interior renovation plans starting Fall 2020, we are making available an even greater way for our community to become involved. Make an investment into your community by supporting the Library with a donation in exchange for naming a piece of the Library for yourself or a loved one.

Gifts and donations are a vital way to support the future of the Library, its collections, services, and programs.

### Levels

Financial donations are available in several dollar amount increments, ranging from \$5,000 to \$50,000. Visit [palatinelibrary.org/donate](https://palatinelibrary.org/donate) for more information on levels and spaces available.



## New Library Catalog Coming This Fall!

This September, we are joining Cooperative Computer Services (CCS), a group of 28 area libraries that share an online catalog and patron database.

### Benefits of Joining CCS libraries:

- You can request books, movies, music, and more from these CCS libraries
- Your library card will already be registered at CCS libraries
- You can request items from any CCS library to pick up at Palatine Library
- You can return items to any CCS library

**With the new catalog, we will not be able to save your reading history. Please save your reading list before September to keep any of that information.** More information about the new catalog changes will be available in the fall newsletter.



# Dig Deeper

at  
Palatine Library



## Library Card Application Online

If you feel more comfortable applying for a library card from home, District residents can apply online for a 90-Day library card. Visit [palatinelibrary.org/card-application](http://palatinelibrary.org/card-application)



## Dig Deeper from Home with your Library Card

### hoopla

#### Host a Bookclub with Hoopla

Keep your book club up and running using Hoopla for instant downloads of eBooks and audiobooks with no wait at [palatinelibrary.org/books-movies-more/ebooks-downloads](http://palatinelibrary.org/books-movies-more/ebooks-downloads)

### kanopy

#### Stream Movies

Never run out of movies to watch with Hoopla and Kanopy. All you need to gain access is your Palatine Library card at [palatinelibrary.org/books-movies-more/movies](http://palatinelibrary.org/books-movies-more/movies)

### creativebug

#### Get Crafty

Are you "buggin" for some new ideas? Take some time to explore this online resource full of educational and professional tools that focus on arts and crafts for all skill levels. Access at [palatinelibrary.org/creativebug](http://palatinelibrary.org/creativebug)

### MANGO

#### Learn a Language

Recently we've all had a lot of time to think about the things we want to do that we've just never gotten around to. For some of us, that includes learning a new language. Mango Languages can help! Access at [tinyurl.com/ppldmangolang](http://tinyurl.com/ppldmangolang)

#### Access eBooks and Audiobooks

Did you know you can still use the Library when you're on the go with our digital collection? Audiobooks, eBooks, comics, magazines, music, and movies available instantly at [palatinelibrary.org/books-movies-more/ebooks-downloads](http://palatinelibrary.org/books-movies-more/ebooks-downloads)

### GALE COURSES

#### Self-paced Learning

Been looking to expand your skill set? Gale Courses offers over 350 online courses in personal and professional development. Courses are offered once a month and span six weeks. Visit [education.gale.com/l-palatine](http://education.gale.com/l-palatine) with your library card to get started.



#### Stay connected on Social Media

Follow Palatine Library District on Facebook, Twitter, and Instagram to stay connected 24/7.

# Summer Reading Program

Online Sign-up Starts Monday, June 1 – Friday, August 7

## Reading Requirements

Birth – Grade 2	Read 30 Books
Grades 3 – 6	Read 10 Books
Grades 7 – 12	Read 5 Books
Adults	Read 5 Books



## Sign Up Online:

Go to [palatinelibrary.org](http://palatinelibrary.org) to sign up on Beanstack, or [palatinelibrary.beanstack.org/reader365](http://palatinelibrary.beanstack.org/reader365)

Download the Beanstack Tracker app on your smartphone or device. You may already have an account from past reading programs.

If you cannot sign up online, call any location and our friendly staff will help you. For valid District cardholders.

## Sign-up Online and Win!

Sign up online between June 1 and August 7 on Beanstack to be entered in a WEEKLY RAFFLE for a chance to win a gift card from one of our Summer Reading Sponsors. After registering, pick up a coupon card when you next visit the library—generously provided by our Library Champion partners!

Prizes will be raffled off throughout the summer. You will receive a phone call or e-mail if you are one of our winners.

## Choose Your Grand Prize!

After completing the program, you receive your choice of a Grand Prize T-Shirt or Tote Bag, generously donated by Friends of the Palatine Public Library. To request your completion prize, call 847-358-5881 and order your t-shirt size or request a tote. Staff will place the item on hold for Curbside Pickup through August 31 - while supplies last. T-shirt size selection is limited. No returns or exchanges.

## Whole Household Prize

Each household of two or more members can earn a gift card when every member of the household completes the Summer Reading Program. Send a picture of the whole group to [DigDeeper@palatinelibrary.org](mailto:DigDeeper@palatinelibrary.org) wearing your Dig Deeper at Palatine Library t-shirts or holding their tote bag and receive one gift card. We'll display your photo online. Claim your gift card by Monday, August 17.

## No Kick-off Party

Although we enjoy celebrating the beginning of Summer Reading with all of you, this year we need to continue practicing social distancing by canceling our usual Kick-off Party.

We strongly encourage all our participants to sign-up online by visiting [palatinelibrary.beanstack.org/reader365](http://palatinelibrary.beanstack.org/reader365), or log on with the Beanstack app.

## We "Dig" our Partners!

Thanks to these generous businesses and organizations for providing coupons and discounts in support of our Summer Reading Program.



Deer Park



SALON  
LORRENE



Palatine



## Design Challenge

All Summer Long

Dig Deep at home and create your own dinosaur from household materials! Share your dinosaur creation with the Library by sending a picture to [DigDeeper@palatinelibrary.org](mailto:DigDeeper@palatinelibrary.org) and we will post it on the Library's Instagram or Flickr page.



Programs dates may be subject to change and/or cancellation.

JUNE

# Dig Deeper at Palatine Library



## Summer Reading Program Sign-up Starts

Monday, June 1 – Friday, August 7  
See page 5 for details.

## RAGBRAI Ride with the Bike Palatine Club

Thursday, June 4, 7:00 – 8:00 p.m.

Join Bike Palatine Club members in recounting their exciting experiences cycling 2019's 47th annual RAGBRAI: The Register's Annual Great Bike Ride Across Iowa. *Sign up begins now.*

## Virtual Audobon Community Science Programs

Monday, June 29, 7:00 – 8:00 p.m.

Learn how you can be a community scientist and help the Audubon Society with Chicago area research projects. *Sign up begins 6/15.*

## Dann and Raymond's Movie Club: The Greatest Comedy Films

Wednesday, June 10

6:30 – 8:30 p.m.

Daily Herald movie critic Dann Gire and film historian Raymond Benson present part two of the greatest comedy films from the 1960s to the present.

*Sign up begins now.*

## Polish Cooking

Wednesday, June 17

6:30 – 8:00 p.m.

Expand your culinary expertise and join Susan Maddox as she prepares some Polish recipes for us at home. *Sign up begins 6/3. Valid District cardholders only.*

JULY

## Duct Tape and Fabric Tote Bag

Please select one date:

Tuesday, July 7

11:00 a.m. – 1:00 p.m.

*Sign up begins 6/23.*

Thursday, July 30

6:30 – 8:30 p.m.

*Sign up begins 7/16.*

Create a tote bag out of duct tape and fabric. **Valid District cardholders only. All supplies provided.**

## The Woman Behind the Teddy Bear

Wednesday, July 8

7:00 – 8:00 p.m.

Teddy Roosevelt was the namesake of the world-famous Teddy Bear, but do you know the incredible story of the woman who invented it? Learn the story of Margarete Steiff from Southern Germany who created an internationally known brand in the male dominated world of the 19th century.

*Sign up begins 6/24.*



## The Dark History of Nursery Rhymes

Wednesday, July 15  
7:00 – 8:30 p.m.

John Gowing presents the real meaning behind the nursery rhymes we learned as children and how they played a role in some dark periods of Britain's past. *Sign up begins 7/1. Not suitable for children.*

## On the Good Ship Lollipop: The Life of Shirley Temple

Wednesday, July 22  
6:30 – 8:30 p.m.

Shirley Temple was so much more than the curly-headed, tap-dancing, child star from her movie career. She also had a distinguished career as an American diplomat. Join Jim Gibbons for a presentation about her incredible life. *Sign up begins 7/8.*

## Walt Disney: Creativity Frame by Frame

Wednesday, July 29  
7:00 – 8:00 p.m.

An intimate portrait of the quiet innovator who spent a lifetime combining creativity with commerce, presented by Robert Burton. Surprising insights from friends, family and colleagues. Includes clips from some of Disney's finest productions. *Sign up begins 7/15.*

# AUGUST

## Painted Fabric Wall Art

Choose one:

Tuesday, August 4  
11:00 a.m. – 1:00 p.m.  
*Sign up begins 7/21.*

Monday, August 17  
6:30 – 8:30 p.m.  
*Sign up begins 8/3.*

Create fun abstract art on fabric and then frame with some embroidery hoops. **Valid District cardholders only. All supplies provided.**

## Mind Games 1: The Science of Perception

Wednesday, August 5  
7:00 – 8:00 p.m.

William Pack explores the different ways our brains trick us, how optical illusions work, why people fall for scams, and how we make choices that are influenced subconsciously. *Sign up begins 7/22.*

## Fall Harvest Recipes

Wednesday, August 12  
6:30 – 8:00 pm

Get ready for fall harvest with Dave Esau as he brings us some delicious recipes to make using the fruits of our garden. *Sign up begins 7/29. Valid District cardholders only.*

## Escape Room: Common Senses

Saturday, August 15  
9:30 a.m. – 4:30 p.m.  
Sunday, August 16  
12:30 – 4:30 p.m.

Bring your friends and use your wits and senses to solve the puzzles and escape the room! **For small groups. Sessions last approximately 1 hour. Contact [palatine@palatinelibrary.org](mailto:palatine@palatinelibrary.org) to sign up beginning 8/1.**

## Goebbels' Propaganda Machine: The Rise to Power of Adolph Hitler

Tuesday, August 18  
6:30 – 8:30 p.m.

Historian Jim Gibbons presents Joseph Goebbels' propaganda machine by discussing Goebbels' and Hitler's methods, madness, and relentless drive to promote Nazi causes. *Sign up begins 8/4.*

## The CSI Phenomenon: Forensics and Television

Wednesday, August 26  
7:00 – 8:00 p.m.

Forensic Science lecturer, Hal Tinberg, describes some of the shows that may have inspired the creation of the 2000 series *CSI: Crime Scene Investigation* along with the talented people and remarkable series of events that led to *CSI*. *Sign up begins 8/12.*

## SIGN UP

begins 2 weeks before each program date.

847-358-5881, x167  
[palatinelibrary.org](http://palatinelibrary.org)

Programs dates may be subject to change and/or cancellation.



## HEALTH AND WELLNESS

### Chair Yoga

Wednesdays, 12:00 – 1:00 p.m.

**June 10, July 8, August 12**

Explore gentle postures, breath work, meditation, and deep relaxation with Karen Fotopoulos, a registered yoga teacher from Discover Yoga with Karen. **Sign up begins two weeks prior to each date.**

### Medicare Basics and You

Thursday, June 25, 7:00 – 8:00 p.m.

Have Medicare questions? Learn about eligibility, enrollment, costs, Medicare supplements, prescription drug plans, advantage plans, and low-income assistance with Nancy Frenk, MA, Director of Social Services at the Palatine Township Senior Citizens Council. **Sign up begins 6/11.**

## CONNECT

### Virtual ESL Conversation Club

2nd and 4th Tuesdays, 9:30 – 10:30 a.m.

**June 9, 23**

**July 14, 28**

**August 11, 25**

**New! Tuesdays, 6:30 - 7:30 p.m.**

**June 2, 16**

**July 7, 21**

**Aug 4, 18**

Practice your English conversational skills with friendly volunteers. **Sign up begins two weeks prior to each date. Basic conversation skills recommended.**

### Board Game Night

Thursdays, 6:30 – 8:30 p.m.

**July 30**

**August 20**

Come play board games from our Library of Things or bring your own.. **Sign up begins two weeks prior to each date.**

## HERITAGEQUEST™

### What Better Time to Look into your Family's History

HeritageQuest Online is a large collection of North American genealogical records and documents. These include primary sources such as all American and Canadian censuses, local and family histories, city directories, immigration records, maps, obituaries, and more. For more information, visit [palatinelibrary.org/databases](http://palatinelibrary.org/databases).







## Entrepreneur Mentoring

Tuesdays, 5:00 – 8:00 p.m.

**June 2**

*Sign up begins now.*

**August 4**

*Sign up begins 7/21*

Do you have a business question? SCORE's experienced business mentors provide advice on every aspect of business planning, start-up, management, and growth. **To schedule a one-hour virtual appointment, visit [score.org/find-mentor](http://score.org/find-mentor).**

# GENEALOGY

## Virtual Genealogy Group

Thursdays, 7:00 – 8:30 p.m.

**June 4**

*Sign up begins now.*

**July 2**

*Sign up begins 6/18*

**August 6**

*Sign up begins 7/23*

Join others interested in genealogy for a session of sharing tips and learning about new research tools.

## Using Digital Newspapers

Monday, July 20, 6:30 – 8:00 p.m.

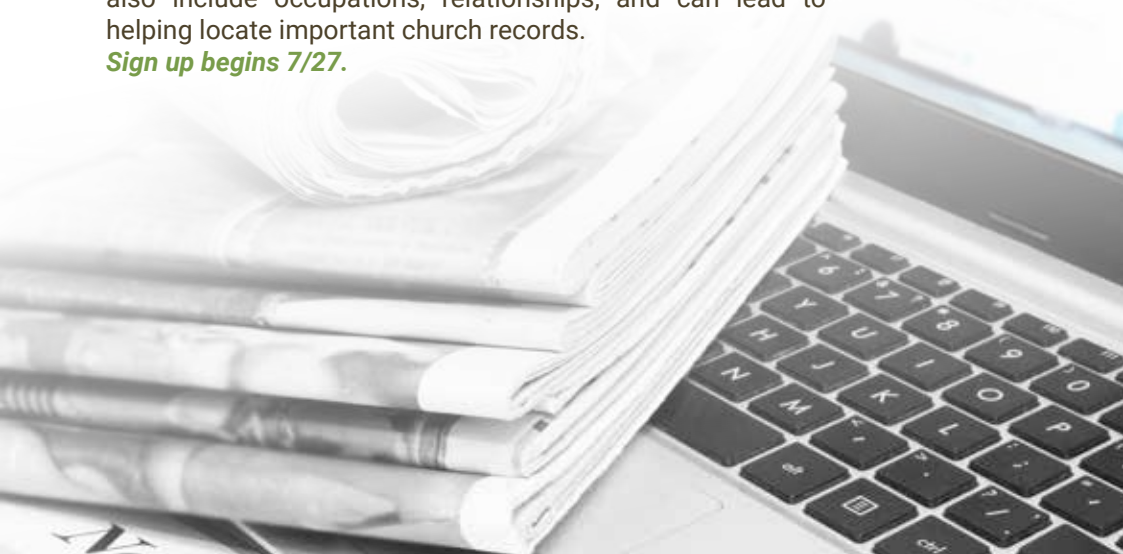
From the *Southampton Hampshire Chronicle* of 1772 to the current issue of the *Daily Herald*, learn which archived newspapers are available and how to use them for family and historical research. *Sign up begins 7/6.*

## European and U.S. Newspapers and Directories: Good News!

Monday, August 10, 7:00 – 8:00 p.m.

Discover birth, marriage, and death records. These directories also include occupations, relationships, and can lead to helping locate important church records.

*Sign up begins 7/27.*



# CAREERS

## Resume Clinic

Tuesday, August 4

6:00 – 8:45 p.m.

Career counselor Fred Ettinger presents strategies for creating a resume in today's market, followed by a one-on-one constructive review of your resume. *Sign up begins 7/21.* **Valid District cardholders only.**



RESUME



- **SIGN UP**
- begins 2 weeks
- before each
- program date.
- 
- **847-358-5881, x167**
- **[palatinelibrary.org](http://palatinelibrary.org)**
- 
- *Programs dates*
- *may be subject to*
- *change and/or*
- *cancellation.*

# TWEEN AND TEEN PROGRAMS

Tween: Grades 4-6 Teen: Grades 7-12

## VIRTUAL TEEN BOOK CLUB

# Dig Deeper at Palatine Library

### Summer Reading Program Sign-up Starts

Monday, June 1 – Friday, August 7

See page 5 for details.



### Teen Virtual Game Night

Mondays, 7:00 – 8:30 p.m.

June 22

July 27

August 24

Relax and have fun with us on Zoom playing trivia and other fun games. Have a secondary device (phone or tablet) available as a controller for certain games before you start. **Sign up begins two weeks prior to each date.**

### Slime Makers

Friday, July 17, 3:00 – 4:00 p.m.

Make your own chocolate oobleck and glow-in-the-dark magic mud. Dress for messy fun. **Grades 4 – 6.**

**Sign up begins 7/3.**

### Ozobots Meet Pokémon Go

Thursday, July 23, 4:00 – 5:00 p.m.

Transform Ozobot into a pokeball and develop your coding skills as you catch Pokemon! **Grades 3 – 6. Sign up begins 7/9.**

### Christmas in July

Tuesday, July 28, 7:00 – 8:00 p.m.

Compete in teams to decorate the best gingerbread house. **Grades 7 – 12.**

**Sign up begins 7/14.**

### Third Tuesday of the Month

7:00 – 8:30 p.m.

**Copies available on Hoopla.**

**Grades 7 – 12.**



June 16

**Sign up begins 6/2**

### Symptoms of Being Human

Riley is many things: Punk rock. Snarky. Rebellious. And gender fluid. Some days Riley identifies as a boy, and others as a girl. But Riley isn't exactly out yet. On the advice of a therapist, Riley starts an anonymous blog to vent those pent-up feelings. **Available now.**



July 21

**Sign up begins 7/7**

### Brown Girl Ghosted

By Mintie Das

We Were Liars meets Riverdale with a supernatural twist in this timely #metoo thriller about mean girls, murder, and race in a quiet Midwestern suburb. **Available now.**

## TWEEN BOOK CLUB



### A Dash of Trouble by Anna Meriano

Wednesday, June 24

3:00 – 4:00 p.m.

Enjoy activities and a lively book discussion.

**Grades 4 – 6.**

**Sign up begins 6/10.**

A young Mexican-American girl discovers that she has magical abilities. **Available now.**

### Teen Advisory Board 2020 – 2021

For students entering grades 8 – 12. This is a great opportunity to develop leadership skills, become more connected in the community, brainstorm ideas for teen programs, and assist at popular Library programs. **TAB members meet monthly on the second Tuesday of every month (September 2020 through May 2021) from 7:00 – 8:30 p.m. Online applications are available to valid District cardholders August 1 through 15 at [palatinelibrary.org/volunteers](http://palatinelibrary.org/volunteers)**



# CHILDREN'S PROGRAMS

Parents and caregivers must remain with children at storytimes.

## EARLY LITERACY STORYTIMES

### REGISTRATION REQUIRED

for all storytimes beginning two weeks prior to each date. Check our Event Calendar for possible virtual storytimes.

### Baby Storytime

Birth through 12 months:

Thursdays, 10:00 – 10:30 a.m.

June 11, 25

July 9, 23

### Toddler Storytime

Ages 1 through 2:

Tuesdays, 10:00 – 10:30 a.m.

Fridays, 10:00 – 10:30 a.m.

No storytime 8/14

### Preschool Storytime

Ages 3 through 5:

Tuesdays, 10:00 – 10:30 a.m.

Fridays, 10:00 – 10:30 a.m.

No storytime 8/14

### Family Storytime

Birth through 5:

**MORNINGS**

Saturdays, 10:00 – 10:30 a.m.

July 11, 25

August 8, 22

**EVENINGS**

Wednesdays, 6:30 – 7:00 p.m.

July 8, 22

August 5, 19

Programs within the same week will feature the same stories.



For more information, visit  
[palatinelibrary.org/1000books](http://palatinelibrary.org/1000books)

## AROUND TOWN

### Stories at Panera

Mondays, 10:00 – 10:30 a.m.

July 13

Sign up begins 6/29

August 10

Sign up begins 7/27

Enjoy stories and music. Children receive a complimentary Petite Chocolate Chipper Cookie and milk. **Ages 2 through 6. Held offsite at Panera Bread, 1603 N. Rand Road, Palatine.**



### Stories at My Museum

Wednesdays, 10:00 – 10:30 a.m.

June 10

Sign up begins now.

July 15

Sign up begins 7/1

Enjoy storytime then stay to play at this hands-on museum created for kids, by kids. **All ages. Held offsite at My Museum, 37 E. Northwest Hwy, Palatine.**



### Celebrate Storywalk®'s Third Year

Wednesday, August 5

10:00 – 10:30 a.m.

See page 16 for details.



### Stories at Palatine Park District Sites

Come to special summer storytimes at these Palatine Park District locations. **All ages. Questions, call Karen Rude (PPD), 847-496-6239. Held offsite.**

Maple Park

316 N. Winston Drive, Palatine

**Wednesday, July 8**

**10:00 – 10:30 a.m.**

Sign up begins 6/24

Thursday, July 9

**6:30 – 7:00 p.m.**

Sign up begins 6/25

Oak Park

455 N. Clark Drive, Palatine

**Wednesday, July 29**

**10:00 – 10:30 a.m.**

Sign up begins 7/15

Thursday, July 30

**6:30 – 7:00 p.m.**

Sign up begins 7/16

**SIGN UP**  
begins 2 weeks  
before each  
program date.

847-358-5881, x132  
[palatinelibrary.org](http://palatinelibrary.org)

Programs dates  
may be subject to  
change and/or  
cancellation.

JUNE

# Dig Deeper

at  
Palatine Library

## Summer Reading Program Sign-up Starts

Monday, June 1 –  
Friday, August 7  
See page 5 for details.



## Play and Learn: Dig Deeper into Dinosaurs STEAM

Thursday, June 11  
10:00 – 11:00 a.m.

Dig deeper to become a Paleontologist as we discover and investigate dinosaurs through stories, art, math, and science. **Ages 4 through 7 with parent/caregiver.** Sign up begins now.



Andertoons

## Dinosaurs vs. Robots Cartooning Class

Friday, June 26  
1:00 – 2:00 p.m.

Draw dangerous dinosaurs on one side of the page and then radical robots on the other. What happens next? Do they fight or have a picnic? Shoot lasers or share ice cream? You decide during this fun cartooning class taught by Andertoons. **Suggested for Grades K and up.** Sign up begins 6/12 for online program

# ALL SUMMER LONG

## Crafty Thursdays

Thursdays, 10:00 a.m. – 8:00 p.m.

June 4, 18  
July 9, 23  
August 6

Spark your child's creativity by making a simple craft together. **Sign up begins two weeks prior to each date.**



## Summer STEAM

Mondays, 2:00 - 4:00 p.m.

June 8, 15, 22, 29  
July 6, 13, 20, 27  
August 3, 10

Stop by for fun STEAM activities all summer. **Ages 5 and up with parent/caregiver.** Sign up begins two weeks prior to each date.

## Wonder Wednesdays

Wednesdays, 2:00 - 2:30 p.m.

June 3, 10, 17, 24  
July 1, 8, 15, 22, 29  
August 5, 12

Join us online for a fun activity! Check our online calendar for details. **Grades K-6.** Sign up begins two weeks prior to each date.



JULY

# CHILDREN'S PROGRAMS

Parents and caregivers must remain with children under 9 years old.

## Dave DiNaso's Traveling World of Reptiles

Friday, July 10  
11:00 a.m. – 12:15 p.m.

Join us for an up-close experience about reptiles and amphibians from around the world. *Sign up begins 6/26 for online program.*



## DIY Popsockets

Wednesday, July 29  
2:00 – 4:00 p.m.

Create your own custom Popsocket. *Grades 4 – 12. Sign up begins 7/15.*

## Harry Potter Youth Trivia

Friday, July 31  
3:00 – 4:30 p.m.

Celebrate Harry Potter's birthday with trivia from the first three Harry Potter books. Come with a team or on your own. *Grades 3 – 6. Sign up begins 7/17.*



## Ozobots Meet Pokémon Go

Thursday, July 23  
4:00 – 5:00 p.m.

Transform Ozobot into a pokeball and develop your coding skills as you catch Pokemon! *Grades 3 – 6. Sign up begins 7/9.*



## Mr. Jon Concert

Friday, July 24  
11:00 – 11:45 a.m.

Energetic family music that is all about fun, movement, and laughter! *Sign up begins 7/10 for online program.*



**REGISTRATION REQUIRED** for all children's programs beginning two weeks prior to each date. Check our Event Calendar for possible virtual programs.

**SIGN UP** begins 2 weeks before each program date.

847-358-5881, x132  
[palatinelibrary.org](http://palatinelibrary.org)

*Programs dates may be subject to change and/or cancellation.*

**STEM & STEAM**

Inspired by a nationwide educational initiative that explores Science, Technology, Engineering, Arts, and Math

# NORTH HOFFMAN BRANCH

Willow Recreation Center • 3600 Lexington Drive  
Hoffman Estates • 847-934-0220  
Hours on the back page

# Dig Deeper

at  
Palatine Library



**Summer Reading Program  
Sign-up Starts**  
Monday, June 1 – Friday, August 7  
See page 5 for details.

● **Inscripción del Programa  
de Lectura de Verano Inicia**  
● **Lunes, 1 de junio – Viernes, 7 de agosto**  
● **Vea la página 5 para más detalles.**

## Preschool Storytime

Parents and caregivers must remain with children.

Mondays, 12:30 – 1:00 p.m.

June 1, 15

July 13, 27

August 10, 24

Ages 1 – 5. Sign up begins two weeks prior to each date.

## Crafty Fridays

Fridays, 1:00 – 5:00 p.m.

July 10, 24

August 28

Spark your child's creativity by making a simple craft together. Sign up begins two weeks prior to each date.

## Summer STEAM

Saturdays, 10:00 a.m. – 2:00 p.m.

July 18

August 22

Stop by the Desk to pick up a fun STEAM activity to test at home. While supplies last. Ages 5 and up with parent/caregiver. Sign up begins two weeks prior to each date.



## Let's Explore: Fossils

Tuesday, July 2, 12:30 – 1:30 p.m.

Become a Paleontologist as we explore fossils through stories and some hands-on activities. Sign up begins 6/18.

## LEGO Robotics STEAM

Wednesday, July 22, 12:00 – 1:00 p.m.

Build a motorized LEGO rover, add sensors, and program the rover to move using our LEGO WeDo 2.0 kits. Grades 3 – 5. Sign up begins 7/8.



Parents and caregivers must remain with children.

Los padres o persona de cuidado necesitan mantenerse junto a los niños.

## RAND ROAD

### Preschool Storytime

Fridays, 11:30 a.m. – 12:00 p.m.

July 3, 17

August 7, 21

Ages 1 – 5. Sign up begins two weeks prior to each date.

- **Hora de Cuentos para Preescolares**

- Los viernes, de 11:30 a.m.

- a 12:00 p.m.

- 3, 17 de julio

- 7, 21 de agosto

- Para edades 1 – 5. Inscripción iniciara dos semanas antes de la fecha.

### Crafty Tuesdays

Tuesdays, 1:00 – 5:00 p.m.

July 14, 28

August 11, 25

Spark your child's creativity by making a simple craft together. **All ages.** Sign up begins two weeks prior to each date.

- **Martes de Manualidades**

- Los martes de 1:00 a 5:00 p.m.

- 14, 28 de julio

- 11, 25 de agosto

- Despierte la chispa de la creatividad de sus niños creando una manualidad sencilla juntos. **Para todas las edades.** Inscripción iniciara dos semanas antes de la fecha.



### Summer STEAM

Saturdays, 10:00 a.m. – 12:00 p.m.

July 25

August 29

Stop by the Desk to pick up a fun STEAM activity to test at home. **While supplies last. Ages 5 and up with parent/caregiver.** Sign up begins two weeks prior to each date.

- **Verano STEAM**

- Los sábados, 10:00 a.m.

- a 2:00 p.m.

- 25 de julio

- 29 de agosto

- Visite el Lector y recoja una actividad STEAM para probar en casa. **Mientras no se agoten existencias. Para edades de 5 a mayor con un padre/cuidador.** Inscripción iniciara dos semanas antes de la fecha.

### Prehistoric Animal Show

Thursday, July 9

1:00 – 2:00 p.m.

Are you a lover of reptiles, amphibians, and bugs? Come experience some of the world's most ancient animals with Crosstown Exotics. **All ages.** Sign up begins 6/25.

- **Espectáculo de Animales**

- **Prehistóricos**

- Jueves, 9 de julio

- 1:00 a 2:00 p.m.

- ¿Te encantan los reptiles, anfibios, y los insectos? Ven para tener la experiencia de conocer a algunos de los animales más antiguos del mundo con Crosstown Exotics. **Para todas las edades.** Inscripción iniciara 6/25.

**STEM & STEAM**

Inspired by a nationwide educational initiative that explores Science, Technology, Engineering Arts, and Math

Incentivo educacional inspirado por toda la nación que explora Ciencia, Tecnología, Ingeniería, Arte, y Matemáticas.

### La Lotería

Tuesday, August 4

6:00 – 7:30 p.m.

Learn to play La Lotería, a traditional game of chance played throughout México.

**All ages.**

Sign up begins 7/21.

- **La Lotería**

- Martes, 4 de agosto

- 6:00 a 7:30 p.m.

- Para todas las edades.

- Inscripción iniciara 7/21.



### REGISTRATION

**REQUIRED** for all

children's programs beginning two weeks prior to each date.

Check our Event Calendar for possible virtual programs.

- **Programs dates may be subject to change and/or cancellation.**

### REGISTRACIÓN

**SERÁ NECESARIA** para todos los programas de niños dos semanas antes de cada fecha. También puede revisar el Calendario de Eventos para posibles programas virtuales.

- **Las fechas de programación pueden estar sujetas a cambios o/cancelación.**

# Tech Tips from Library Experts



Have you always wanted to learn basic programming? Learn how to write basic Python statements and expressions, strings, variables, and conditional code which are common in all programming languages with Python.

Python is a high-level, approachable programming language used in software engineering, web development, robotics and AI. To get started, grab your Library card and visit [tinyurl.com/ppldlyndapython](https://tinyurl.com/ppldlyndapython)



## Third Annual StoryWalk® Returns this Summer

For a third year in a row, StoryWalk® Project returns. This activity is a delightful way for the whole family to enjoy reading while participating in an outdoor activity together. Made possible by a partnership with Palatine Library Foundation, Palatine Park District, and many generous donors.

## Celebrate StoryWalk®'s Third Year!

**Wednesday, August 5, 10:00 – 11:00 a.m.**

Bring the kids and enjoy some stories together as we celebrate the unveiling of this year's StoryWalk® Project. As you walk along the path, pages from a book are displayed in permanent panels and direct you from beginning to the end of the story. **Hamilton Reservoir is located at 1037 N. Smith Street, Palatine. Drop in. For more info visit [ppldf.org](https://ppldf.org).**

The Foundation is a 501(c)(3) charitable organization that raises funds for Palatine Library in order to enhance services, materials, and activities.

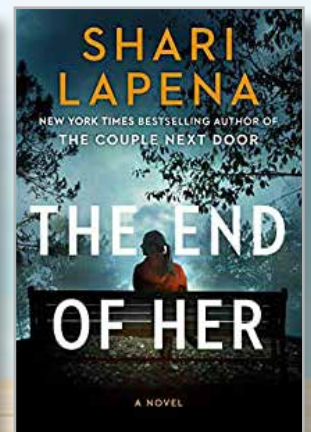
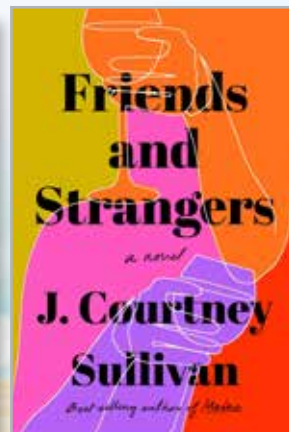
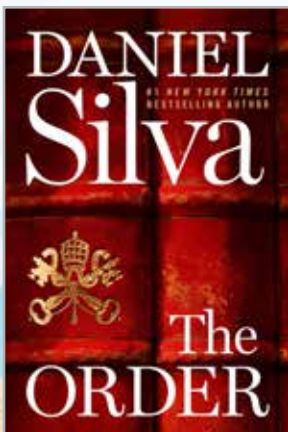
*The StoryWalk® Project was created by Anne Ferguson of Montpelier, VT and developed in collaboration with the Kellogg-Hubbard Library. StoryWalk® is a registered service mark owned by Ms. Ferguson.*



# Big Books of Summer 2020



Search our catalog and place a hold.  
We'll let you know when it's ready to pick up!





# BOOK GROUPS

eBooks and eAudiobook copies available in Hoopla and Overdrive. Call x167 for a print book to be placed on hold. Print books available on the sign-up date.

## MONDAY EVENING

Mondays, 7:00 – 8:30 p.m.

**June 15**

*Sign up begins 6/1.*

### **The Great Believers**

by Rebecca Makkai

A novel set in 1980s Chicago and contemporary Paris follows the director of a Chicago art gallery and a woman looking for her estranged daughter in Paris who both struggle to come to terms with the ways AIDS has affected their lives.

**July 20**

*Sign up begins 7/6*

### **Fruit of the Drunken Tree**

by Ingrid Rojas Contreras

The story of a sheltered girl and a teen maid, who forge an unlikely friendship that threatens to undo them both amid the violence of 1990s Columbia.

**August 24**

*Sign up begins 8/10*

### **Dopesick**

by Beth Macy

The story of America's opioid addiction.

## CRIME READERS

Wednesdays, 2:00 – 3:00 p.m.

**June 13**

*Sign up begins 5/30*

### **The Van Apfel Girls Are Gone**

by Felicity McLean

Two sisters return to their Australian hometown to make sense of the unsolved disappearance of their best friends from 20 years earlier.

**July 8**

*Sign up begins 6/24*

### **Leave No Trace**

By Mindy Mejia

Maya Stark, a language therapist at a psychiatric facility, is challenged when a boy missing for 10 years refuses to speak about his father, the ransacked campsite they both disappeared from, or what has transpired over the last decade.

**August 12**

*Sign up begins 7/29*

### **American Spy**

by Lauren Wilkinson

In 1986, Marie is tapped by the CIA to insinuate herself with the charismatic new leader of Burkina Faso in order to destabilize his fledgling government and sway them towards U.S. interests.



Friday Morning Book Discussion is taking a break for summer and will return in September.

### Hold Re-delivery Now Available in Digital Library of Illinois/Libby

Some of these Book Discussions titles are available in eBook and audiobook format.



**DIGITAL LIBRARY**  
of Illinois

Check out eBooks with more flexibility than ever with Digital Library of Illinois and Libby with hold re-delivery. Suspend a hold even after it becomes available for you to checkout if you're not ready to read it yet.

After receiving notification that your hold is available you can borrow the title within three days, suspend the hold, or cancel the hold.

Check out Libby in your app store. For more information visit [palatinelibrary.org/books-movies-more/ebooks-downloads](https://palatinelibrary.org/books-movies-more/ebooks-downloads).

**SIGN UP**  
begins 2 weeks  
before each  
program date.

847-358-5881, x132  
[palatinelibrary.org](https://palatinelibrary.org)

*Programs dates  
may be subject to  
change and/or  
cancellation.*

## Library on the Go

No matter where you are the Library is at your fingertips. Tap into these resources anytime, anywhere with your Palatine Library card. They work on smartphones, tablets, ereaders, and streaming devices. Visit [palatinelibrary.org/books-movies-more/ebooks-downloads](http://palatinelibrary.org/books-movies-more/ebooks-downloads)



**Lynda:** Access over 53,000 video on technology, business, and digital media for free with your District library card. Courses include Microsoft basics and more. Visit [palatinelibrary.org/lyndacom-library](http://palatinelibrary.org/lyndacom-library) to get started.



**Learning Express Software Skills:** Discover a variety of tutorials and courses for popular computer programs that can be used across a range of devices, from smartphones to tablets to desktop computers. Courses include Microsoft basics. Visit [palatinelibrary.org/databases](http://palatinelibrary.org/databases) to get started.



**Hoopla:** On-demand eBooks, audiobooks, movies, music, comics, and TV shows. Instantly access hundreds of thousands of titles, with more added daily.



**Kanopy:** Stream more than 30,000 documentaries, movies, and educational videos from thousands of producers such as *Criterion Collection*, *PBS*, *Great Courses*, *Kino Lorber*, and more.



**Digital Library of Illinois/Libby:** Tens of thousands of eBooks including best-sellers and award winners, for all ages and interests.



**Press Display:** Magazines and newspapers from around the globe; includes popular periodicals in Spanish, Russian, Chinese, Polish, Korean, Hindi, and other languages. Also includes U.S. newspapers like the *Chicago Tribune*, *Los Angeles Times*, and *Washington Post*.



**RBdigital:** Access more than ten content services from a single app. Borrow up to one ebook and six audiobooks at a time.



**TumbleBooks:** Over 1000 titles for grades K-6, and includes unique animated, talking picture books, read-along chapter books, national geographic videos, non-fiction books, playlists, as well as books in Spanish and French.

## TECH BASICS

### iPad Basics

**Tuesday, July 7, 1:30 – 3:00 p.m.**

Learn iPad features, controls, settings and how to navigate and organize your screens. Bring your personal iPad to class. **Sign up begins 6/23.**

## MAC

### Mac Basics

**Thursday, July 23**

**6:30 – 8:00 p.m.**

Mike Gershbein from Very Smart People shows you everything you need to know about using mail, surfing the web, keeping the computer updated and backed up, and more. **Sign up begins 7/9.**

## MICROSOFT

### Excel

#### Basic

**Tuesday, August 11**

**6:30 - 8:00 p.m.**

**Sign up begins 7/28**

#### Intermediate

**Prerequisite: Excel Basic**

**Tuesday, August 18**

**6:30 – 8:00 p.m.**

**Sign up begins 8/4**

### Windows 10

#### Basic

**Wednesday, August 12**

**6:30 – 8:00 p.m.**

Learn everything to get started with Windows 10 with Mike Gershbein from Very Smart People.

**Sign up begins 7/29.**

## DIGITAL LIFE

### The Cloud

**Thursday, June 4**  
6:30 – 8:00 p.m.

Are you unsure of what the “Cloud” is? Learn about the different services and tips to make the most of its storage and organization features.

**Sign up begins now.**

### Android Basics

**Tuesday, June 16**  
1:30 – 3:00 p.m.

Get more comfortable with your Android tablet or phone as we demonstrate how to navigate, find apps, and customize your device. Presented by Mike Gershbein from Very Smart People.

**Sign up begins 6/2.**

### Social Media for Business

**Monday, June 22**  
6:30 – 8:00 p.m.

Learn how to use Facebook, Twitter, Instagram, and more to promote your business. Mike Gershbein from Very Smart People shows you how to choose the best site for you and the steps to get started.

**Sign up begins 6/8.**



### Safety for Smart Devices

**Tuesday, June 30**  
6:30 – 8:00 p.m.

Learn how to keep information on your Android or Apple phone or tablet safe from prying eyes. Mike Gershbein from Very Smart People covers location tracking, privacy settings, app setting, and password safety. **Sign up begins 6/16.**

### Facebook Basics

**Thursday, July 2**  
6:30 – 8:00 p.m.

This class covers the basics of Facebook, including how people use it to keep in touch with friends and family. **Sign up begins 6/18.**

### Cutting the Cable

**Monday, July 20**  
6:30 – 8:00 p.m.

Tired of paying an outrageous cable bill each month? Find out how to watch your favorite movies and shows on the Internet. **Sign up begins 7/6.**

### Using Digital Newspapers

**Monday July 20**  
6:30 – 8:00 p.m.

From the *Southampton Hampshire Chronicle* of 1772 to the current issue of the *Daily Herald*, learn which archived newspapers are available at the Library and how to use them for family and historical research. **Sign up begins 7/6.**

### WordPress 101

**Thursday, August 6**  
6:30 – 8:00 p.m.

Learn how to create your own blog or website on Wordpress.com and customize it to your own needs. Please bring your own ideas. **Sign up begins 7/23.**

### Digital Collection Kanopy and Hoopla

**Monday, August 24**  
6:30 – 8:00 p.m.

Learn how to use the Library’s streaming services to enjoy many movies, television shows, and more. Gain access to many acclaimed categories such as the *Criterion Collection*, *PBS*, *Great Courses*, and more. **Sign up begins 8/10.**



**SIGN UP**  
begins 2 weeks  
before each  
program date.

847-358-5881  
[palatinelibrary.org](http://palatinelibrary.org)

*Programs dates  
may be subject to  
change and/or  
cancellation.*

**\*\*ECRWSS\*\***  
**RESIDENTIAL POSTAL CUSTOMER**

NONPROFIT  
U.S. POSTAGE  
PAID  
PALATINE  
ILLINOIS  
PERMIT NO. 2804

## Library Closings

### INDEPENDENCE DAY

Saturday, July 4

### STAFF DEVELOPMENT DAY

Friday, August 14



## PROGRAM SIGN UP CHANGES

At the time of publication, Palatine Library was closed and adhering to Governor Pritzker's Stay-at-home orders. As such, the programs and dates in this publication may be changed and will be subject to mandates and social distancing guidelines related to the COVID-19 pandemic. Programs may be canceled and/or attendance to programs limited. **Please call 847-358-5881 or check the website for more information. See page 2 for details and how to sign up.**



### Sign up for our Email Newsletter!

Receive content and information about our services and programs.

Visit [palatinelibrary.org](http://palatinelibrary.org), scroll to the bottom, submit your email address.

## Connect with us



### LIBRARY BOARD of TRUSTEES

President: Andrea Vanderhoek  
Vice President: Hal Snyder  
Secretary: Tracy Boland  
Treasurer: Bruce Jefferson  
Trustees: Debby Brauer  
Preet Singh  
Jeffrey Westhoff  
Executive Director: Jeannie Dilger

The Board meets the third Tuesday of each month at 7:00 pm. The public is welcome to attend. Meetings may be held virtually due to social distancing restrictions.

This newsletter is published by the Palatine Public Library District.  
Editor, Rebecca Cohen  
Layout, Jean Bolliger



## Curbside Pickup Starting June 2

**Only Main Library Open for Curbside Pick-up**

**Monday – Saturday:  
11:00 a.m. until 5:00 p.m.**

We know how much our community has missed coming to the Library during the stay-at-home order. So we are glad to announce Curbside Pickup starts on June 2!

Palatine Library District cardholders may request items for curbside pickup from the Main Library ONLY. Patrons will need to place a hold on items they want, and then come pick them up. Visit [palatinelibrary.org/curbside](http://palatinelibrary.org/curbside) for full details and updates.

## How to Request Curbside Pickup

- Visit [palatinelibrary.org](http://palatinelibrary.org) and log onto "My Account".
- Search the catalog for desired titles and select "Request It".
- You can also call **847-358-5881** during the hours above for assistance placing holds.
- You will be contacted when your item is ready for pickup.
- Park in the **WEST Parking Lot** and follow signage instructions.
- Returned materials will be quarantined for 7 days before recirculating.
- **We are not accepting book donations currently.**



**PALATINE LIBRARY DISTRICT**  
700 N. NORTH COURT  
PALATINE, IL 60067  
847-358-5881 • [palatinelibrary.org](http://palatinelibrary.org)

Mon-Thurs: 9:00 am – 9:00 pm  
Fri: 9:00 am – 6:00 pm  
Sat: 9:00 am – 5:00 pm  
Sun: 12:00 pm – 5:00 pm



**North Hoffman Branch**  
3600 Lexington Drive  
Hoffman Estates, IL 60192  
847-934-0220

Mon-Fri: 11:00 am – 7:00 pm  
Sat: 9:00 am – 3:00 pm  
Sun: Closed



**Rand Road Branch**  
1585 Rand Road  
Palatine, IL 60074  
847-202-1194

Mon-Thurs: 10:00 am – 6:00 pm  
Fri: 9:00 am – 4:00 pm  
Sat: 9:00 am – 1:00 pm  
Sun: Closed



**Locations may be closed or have limited hours due to stay-at-home restrictions. Check the website for updates.**