

# Library Referendum

## MORE of What

## You Love

### About the Library Referendum

Palatine Public Library District Board of Trustees has voted to place a referendum on the ballot on April 2. This referendum asks voters to approve a limiting rate increase on the Library's property tax levy of 0.075%. This amount will provide for all of the Library's financial needs through 2035. The Library's limiting rate would go from 0.276% in 2017 to 0.351% in 2019. **For a median home value in our Library District, the estimated increase in annual taxes is \$52. In the 44 years since the Library became a District, the Board has never asked for an operating rate increase.** We estimate this increase will generate \$1.7 million per year to cover building maintenance needs and service improvements.

### Why We Need Your Help

The Main Library building is 25 years old and the facility systems are aging past their life expectancy. To address the facility issues, **the Library needs over \$5.8 million in the next six years.** Although the Library has nearly \$1 million in capital reserves, this amount will not cover all the costs and keep the doors open at the same time.

Most urgent capital project needs:

- significant portion of roof needs replacement
- updates to failing HVAC system
- upgrades to energy-efficient lighting

### You've Asked for MORE

You told us you love our customer service, diverse materials, and engaging programs, and you said you want MORE!

VOTE!  
April 2

## Community Forums

Attend to hear more about the referendum:

- Thursday, January 10, 7:00 p.m., Main Library
- Monday, January 14, 7:00 p.m., Falcon Park
- Monday, February 11, 7:00 p.m., Main Library
- Thursday, February 21, 2:00 p.m., Twin Lakes
- Tuesday, March 19, 7:00 p.m., Fremd High School
- Monday, March 25, 7:00 p.m., Main Library



X IF NO –  
THE REFERENDUM FAILS

In order to address \$5.8 million in capital improvements, the Library will be **forced to cut services:**

**REDUCE** hours and days of service at Main Library and Branches

**SHRINK** budget for purchase of new materials available for check-out, resulting in longer wait times

**LIMIT** state-of-the art software and equipment thereby failing to meet the demands of growing technology

**DECREASE** partnerships and outreach programs that impact school students and underserved populations



IF YES –  
THE REFERENDUM PASSES

The Library will be able to offer:

**MORE** preparedness to **maintain our facilities and remain good stewards** of taxpayer dollars

**MORE** service hours for your convenience

**MORE** collaborative spaces and study rooms to accommodate students, entrepreneurs, and groups

**MORE** investments in **new technology** and bandwidth to keep up with advances

**MORE** collaboration and partnerships with schools, businesses, and local organizations to serve our diverse community

**MORE** new books, movies, music, downloadable content, games, and resources

# Library Referendum

## How would this affect my property taxes?

Estimated Impact of Proposed Tax Increase with Homeowner's Exemption

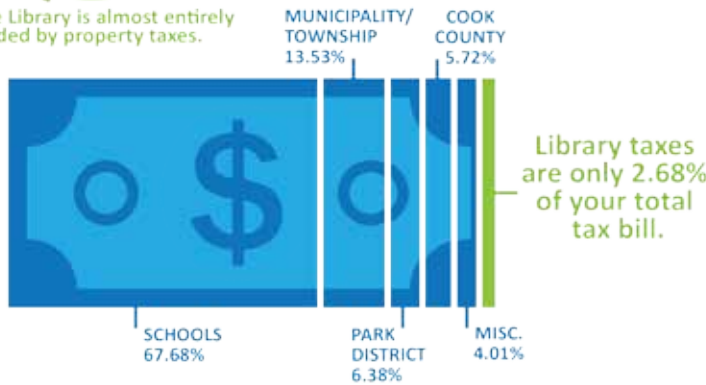


Market Home Value	\$100K	\$150K	\$250K	\$266K (Median)	\$350K
Library Tax in 2019	\$54	\$96	\$179	\$193	\$263
Add'l Cost per Year	\$15	\$26	\$48	<b>\$52</b>	\$70
Add'l Cost per Month	\$1.25	\$2.17	\$4.00	\$4.33	\$5.83



Palatine Library is almost entirely funded by property taxes.

Fiscal Year 2018-2019 ESTIMATED INCOME		
Property Tax	\$6,388,544	94.90%
Fines and Fees	\$164,250	2.44%
State Grant	\$111,229	1.65%
Investment Interest	\$29,600	0.44%
Donations	\$20,000	0.30%
Replacement Tax	\$10,000	0.15%
Miscellaneous Income	\$8,500	0.13%
<b>TOTAL INCOME</b>	<b>\$6,732,122</b>	



99.9% of survey respondents from our Community Survey agreed that the Library is essential to the community!



### By the Numbers – Fiscal Year 2017-2018

- 3624** items checked-out per day
- 72%** of residents have a library card
- 65,434** computer users
- 1370** visits per day
- 52,777** program attendees
- 1370** free programs

### How We Compare to Our Neighbors

Revenues Per Person

Fiscal Year 2017-2018



For more information and resource links visit [www.palatinelibrary.org/more](http://www.palatinelibrary.org/more)

- Letter from Board of Trustees
- FAQs
- Strategic Plan
- Capital Reserves Study
- Financial Management Plan
- Community Survey Report
- Tax Impact Calculator
- Calculate Value of Library Services



[www.palatinelibrary.org/more](http://www.palatinelibrary.org/more) 847-358-3881